

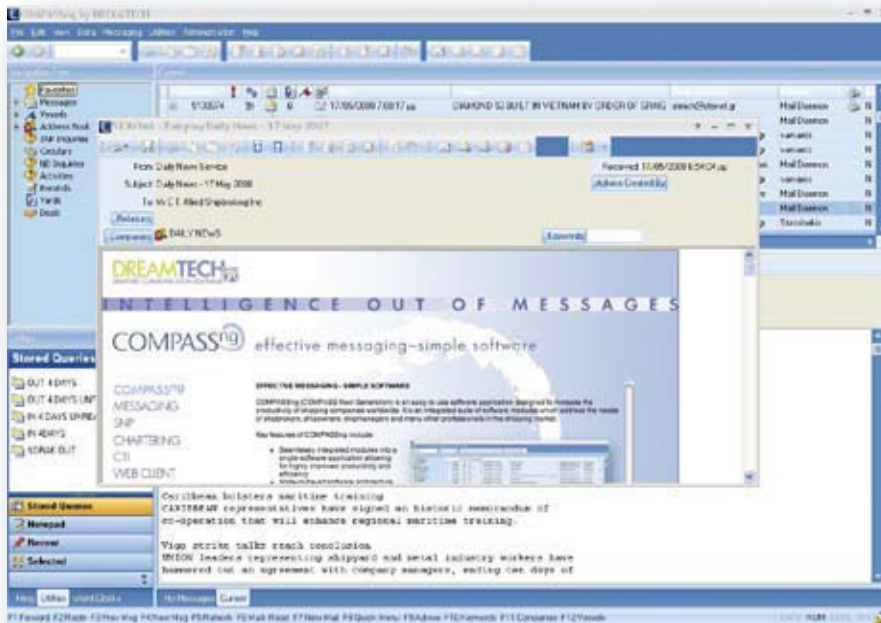


effective messaging  
simple software

COMPASS<sup>ng</sup>

## MESSAGING

- Powerful and fast search engine
- Blackberry and PDA integration
- Integration with Classic and VoIP telephony
- Fully integrated Address book, Calendar and Task Manager
- Access to messages and database via Web browsers
- Advanced filing of messages, deals, fixtures and external files
- Easy management of circular lists
- Proven failsafe management of very high volumes of messages

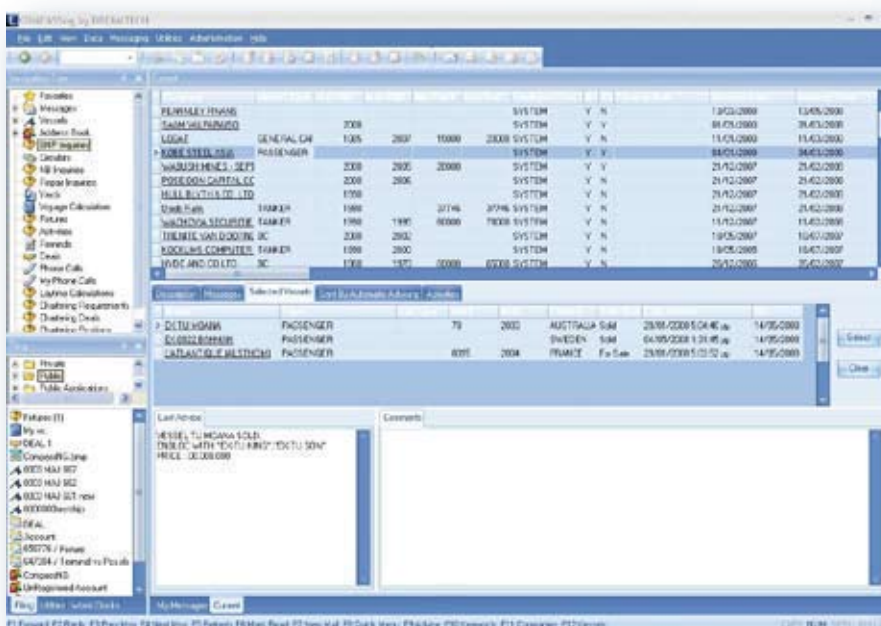


COMPASS<sup>ng</sup> Messaging has been designed, developed and tested exclusively within the shipping industry. It has been installed and used by major shipbrokers, shipowners, shipmanagers and other shipping companies.

when messages mean business

## SNP

- Automated market report generation with tables and graphs
- Single-screen detailed commercial history of vessels
- Searchable database fields
- Two-way matching of vessels and inquiries
- Extra fields for newbuildings and contract resales
- Easy to locate inspectable vessels worldwide



COMPASS<sup>ng</sup> SNP module provides advanced shipbroking functionality and it is fully integrated with COMPASS<sup>ng</sup> Messaging in a single software application. This all-in-one software approach enables higher efficiency in database update and detailed matching of vessel particulars, positions, commercial information but also sophisticated features such as automatic advising and data on newbuildings.

a tool for deals

## CHARTERING

Voyage calculation for Wet and Dry brokers

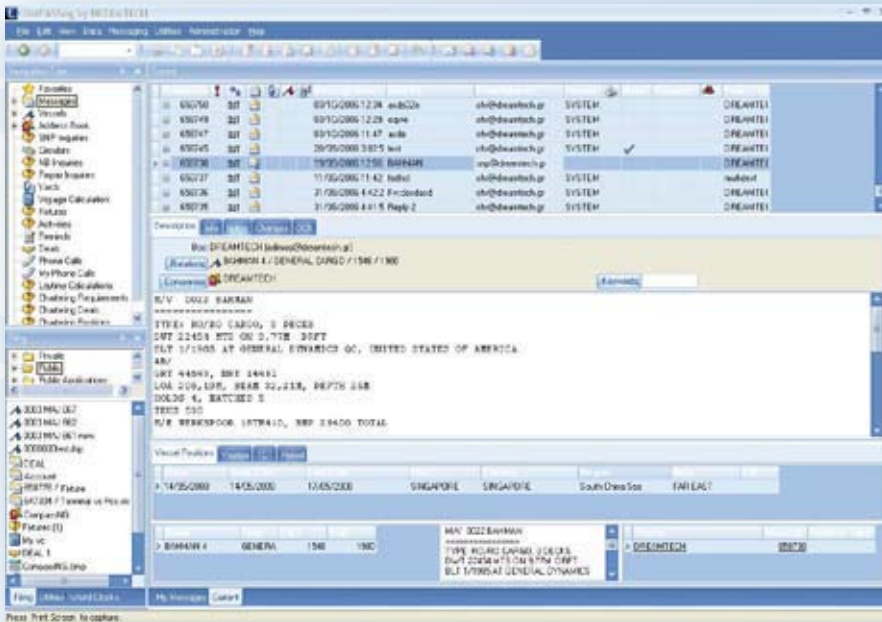
Advanced search for vessels and cargoes

Automated update of position lists into database

Integrated fixture book and filing functionality

Laytime calculation

Automated market report generation with tables and graphs



COMPASS<sup>ng</sup> Chartering module addresses the needs of both Wet and Dry Chartering brokers. Its seamless integration with the COMPASS<sup>ng</sup> Messaging module in a single software application maximizes efficiency and allows users to update vessel positions and chartering requirements from the messaging screen. COMPASS<sup>ng</sup> Chartering can then automatically match tonnage and cargoes based on vessel position and port location.

turn messages into your competitive edge



## MOBILE

The need to be in touch with your messages and all developments at the office while on the move is a fact of life today. COMPASS<sup>ng</sup> can be integrated with most mobile devices so that you can be updated on all incoming messages while being able to send messages and use the office address book on your mobile phone or PDA. Emails regarding vessel particulars, TCD, positions and more can be requested and automatically sent to your mobile device.

messages on the move

## WEB CLIENT

Users are able to reach their office system via any PC. Security is enabled by using Third Party Security Certificates. By means of any Web Browser, such as Microsoft® Internet Explorer, users can read and send emails and faxes, open and forward attachments, use their office address book and even access detailed information on vessels as stored at their offices.

shipping data anywhere, on any device

## SERVICES

DREAMTECH provides the full range of services needed for mission critical applications: Installation and testing of COMPASS<sup>ng</sup> – Data transfer from your commercial or custom existing messaging system into COMPASS<sup>ng</sup> database including messages, address book and commercial information – On-site training of users and administrators – COMPASS<sup>ng</sup> maintenance, support and helpdesk – Update with latest Lloyds Register Fairplay data – Custom Reports design and development of special features.

# INTELLIGENCE OUT OF MESSAGES



#### HEAD OFFICE

Gounaropoulou 17, Athens 157 71, Greece  
Tel +30 210 777 1832, Fax +30 210 775 5452  
email: [info@dreamtech-software.com](mailto:info@dreamtech-software.com)

#### LONDON OFFICE

301b Harbour Yard, Chelsea Harbour, London SW10 0XD, UK  
Tel +44 (0) 20 7349 5999, Fax +44 (0) 20 7751 5516  
email: [ab@dreamtech-software.com](mailto:ab@dreamtech-software.com)

**[www.dreamtech-software.com](http://www.dreamtech-software.com)**